

University of Computer Studies, Yangon

Analyzing Damaged region of 3D Historic Pagodas Images after the Earthquake

Thida Aung

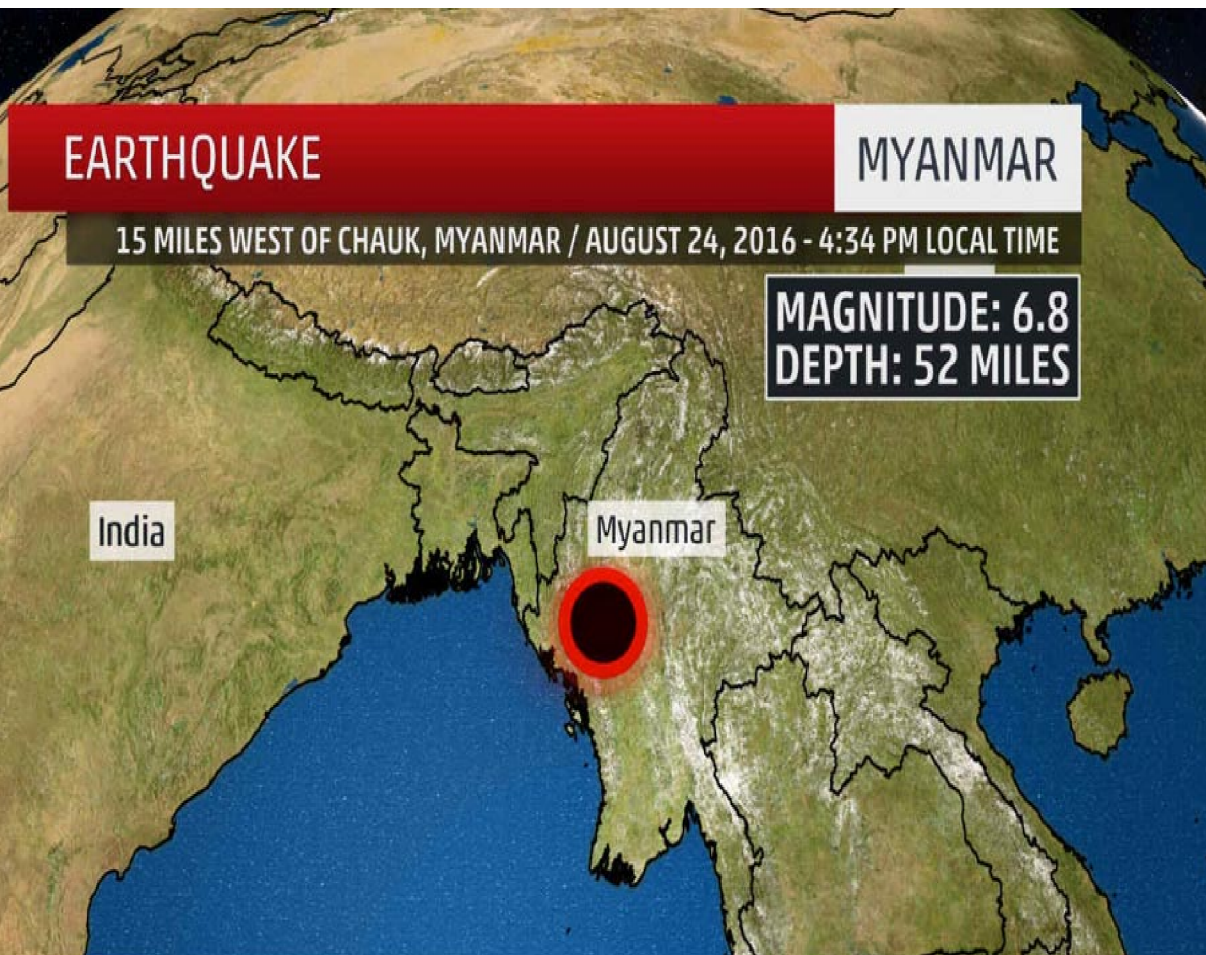
University of Computer Studies, Yangon

Bagan, One of the Treasure Houses in Asia



- located in the **Mandalay Region of Myanmar**
- **between the 11th and 13th centuries**
- **over 10,000 Buddhist temples, pagodas and monasteries**
- **remains of over 2200 temples and pagodas still survive to the present day.**

Severe Damaged in Bagan (24 August, 2016)

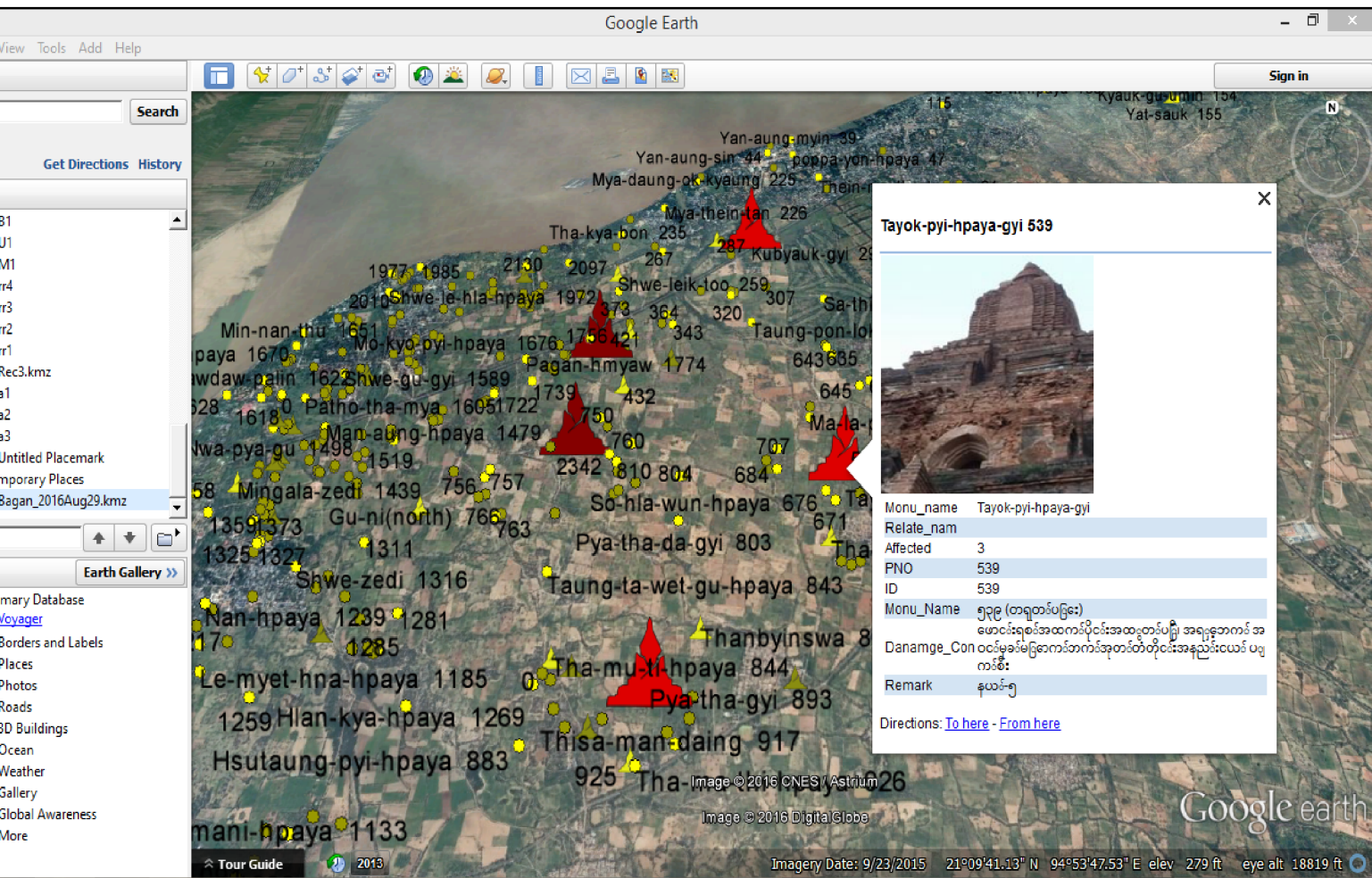


- Total of **397** pagodas damaged
- **15** Severe Damaged Historic Pagodas

ng Aerial Photos by Drones



List of the Damaged Pagodas by kmz file



Tayok Pyi Pagoda

- Location =
(Latitude = 21°9'45.75"
Longitude = 94°54'2.9")
- Damage level = 3

Analyzing Damaged region of 3D Historic Pagoda



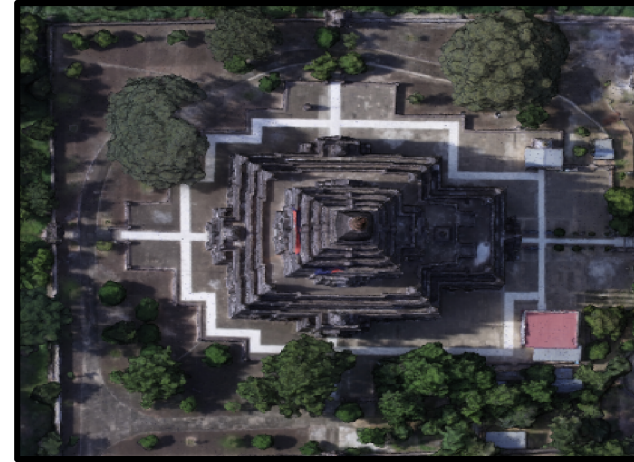
- By using the 2D images, the accuracy of change detection would not be good.



Analyzing Damaged region of 3D Historic Pagoda



- Estimate the history of pagoda by seeing the structure of 3D image
- AD (1174–1211)
- Hollow *gu-style temple*
- The *gu temples* come in two basic styles: "one-face" design and "four-face" design — essentially one main entrance and four main entrances.
- The one-face style grew out of 2nd century Beikthano, and the four-face out of 7th century Sri Ksetra.





Thank You!